

**CERTIFIED LAND CORNER RECORDATION**

DESCRIPTION OF CORNER EVIDENCE FOUND, AND ORIGINAL RECORD (If known)

Section corner 15 14 T.14N., R60W., 6th P.M., Laramie County, Wyoming  
22 23

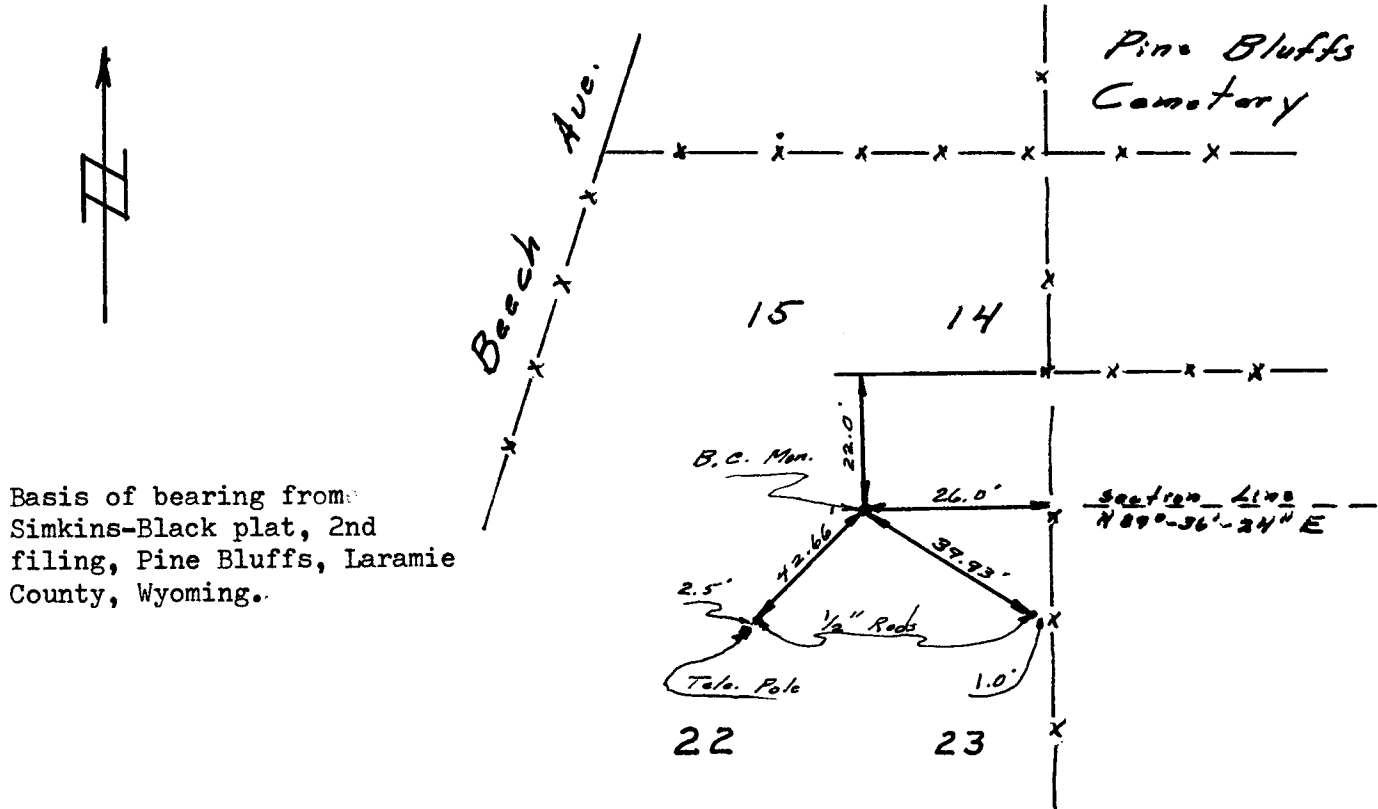
Found 2" diam. brass cap set in concrete and stamped as above plus  
PE & LS 538 1961

DESCRIPTION OF MONUMENT AND ACCESSORIES ESTABLISHED  
TO PERPETUATE THE ORIGINAL LOCATION OF THIS CORNER:

Left monument as found.

Set 1/2" rods to the sw and se for reference points. See sketch for  
distances.

SKETCH, WITH COURSE AND DISTANCE TO ADJACENT CORNER IF DETERMINED IN THIS SURVEY.  
(May Sketch or Paste Reproduction on Reverse Side.)



Basis of bearing from:  
Simkins-Black plat, 2nd  
filing, Pine Bluffs, Laramie  
County, Wyoming.

I, Robert C. Corbet certify that I have carefully performed or reviewed the work  
done on the diagrammed corner as reported on this recordation form and approve the same.

*Robert C. Corbet* 495  
Signature of Surveyor Registration No.

STATE OF WYOMING,  
Office of Clerk and Recorder,  
County of Laramie

This "corner record" was filed for record on the 6 day of January, 19 75, was noted  
on the cross-index plat and is assigned page No. \_\_\_\_\_, in book No. \_\_\_\_\_

*Janet C. Whitehead*  
County Official

|                             |              |              |               |
|-----------------------------|--------------|--------------|---------------|
| Cross Index No. <u>N 17</u> | T. <u>14</u> | R. <u>60</u> | <u>6</u> Mer. |
| _____                       | T. _____     | R. _____     | Mer.          |
| _____                       | T. _____     | R. _____     | Mer.          |
| _____                       | T. _____     | R. _____     | Mer.          |
| _____                       | T. _____     | R. _____     | Mer.          |
| _____                       | T. _____     | R. _____     | Mer.          |
| _____                       | T. _____     | R. _____     | Mer.          |

Photographed

Indexed

Posted

Assessor

County of Lawrence } ss

This instrument was filed for record  
 at 128 o'clock P M. on the  
6 day of January  
 A. D. 1975 and duly recorded in  
 Book \_\_\_\_\_ on page \_\_\_\_\_

*James G. Mitchell*

County Clerk & Ex-Officio Register of Deeds  
 Deputy